

# 30 ORIGINAL CHORALES AND WARM-UPS

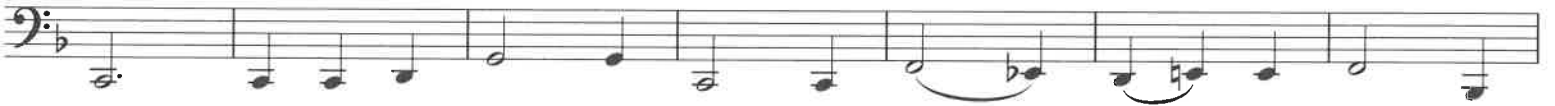
Tuba

Philip Sparke



# Tuba

6 






7 





8 





Tuba

9  Musical notation for measure 9, first line. Bass clef, key signature of two flats (B-flat and E-flat), and 4/4 time signature. The line contains eight measures of music. The notes are: G2, A2, B-flat2, C3, D3, E-flat3, F3, G3. The first four notes are beamed together with a slur, and the last four notes are also beamed together with a slur.

 Musical notation for measure 9, second line. Bass clef, key signature of two flats, and 4/4 time signature. The line contains eight measures of music. The notes are: A2, B-flat2, C3, D3, E-flat3, F3, G3, A2. The first four notes are beamed together with a slur, and the last four notes are also beamed together with a slur.

10  Musical notation for measure 10. Bass clef, key signature of two flats, and 4/4 time signature. The line contains eight measures of music. The notes are: G2, A2, B-flat2, C3, D3, E-flat3, F3, G3. The first four notes are beamed together with a slur, and the last four notes are also beamed together with a slur.

11  Musical notation for measure 11, first line. Bass clef, key signature of two flats, and 4/4 time signature. The line contains eight measures of music. The notes are: G2, A2, B-flat2, C3, D3, E-flat3, F3, G3. The first four notes are beamed together with a slur, and the last four notes are also beamed together with a slur.

 Musical notation for measure 11, second line. Bass clef, key signature of two flats, and 4/4 time signature. The line contains eight measures of music. The notes are: A2, B-flat2, C3, D3, E-flat3, F3, G3, A2. The first four notes are beamed together with a slur, and the last four notes are also beamed together with a slur. Musical notation for measure 11, third line. Bass clef, key signature of two flats, and 4/4 time signature. The line contains eight measures of music. The notes are: G2, A2, B-flat2, C3, D3, E-flat3, F3, G3. The first four notes are beamed together with a slur, and the last four notes are also beamed together with a slur.

12  Musical notation for measure 12, first line. Bass clef, key signature of three flats (B-flat, E-flat, and A-flat), and 3/4 time signature. The line contains eight measures of music. The notes are: G2, A2, B-flat2, C3, D3, E-flat3, F3, G3. The first four notes are beamed together with a slur, and the last four notes are also beamed together with a slur.

 Musical notation for measure 12, second line. Bass clef, key signature of three flats, and 3/4 time signature. The line contains eight measures of music. The notes are: A2, B-flat2, C3, D3, E-flat3, F3, G3, A2. The first four notes are beamed together with a slur, and the last four notes are also beamed together with a slur.

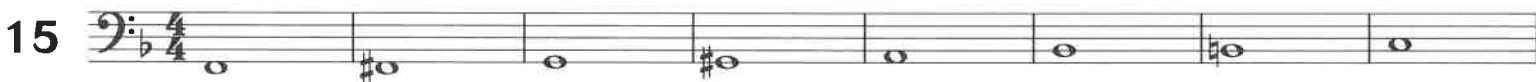
# Tuba

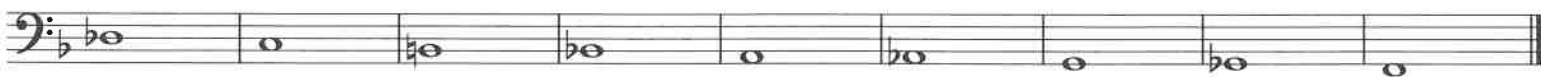
13 



14 



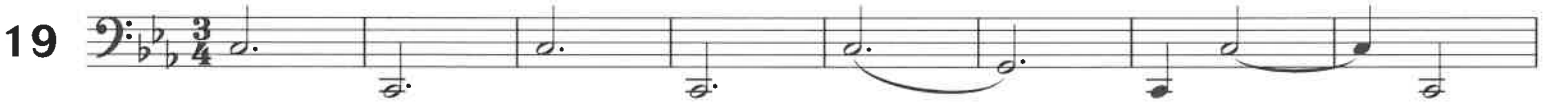
15 



16 



# Tuba



# Tuba

21

1. 2.

22

1. 2.

23

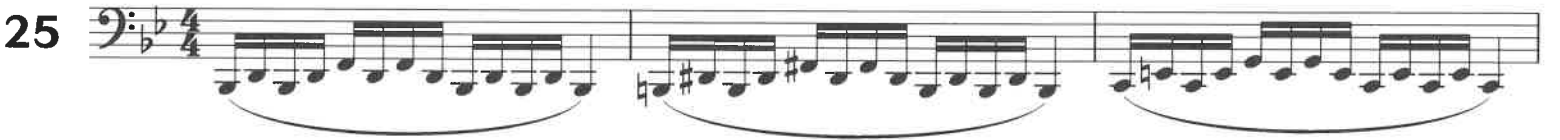
1. 2.

# Tuba

24 





25 







26 



# Tuba

27 



28 



29 



30 



